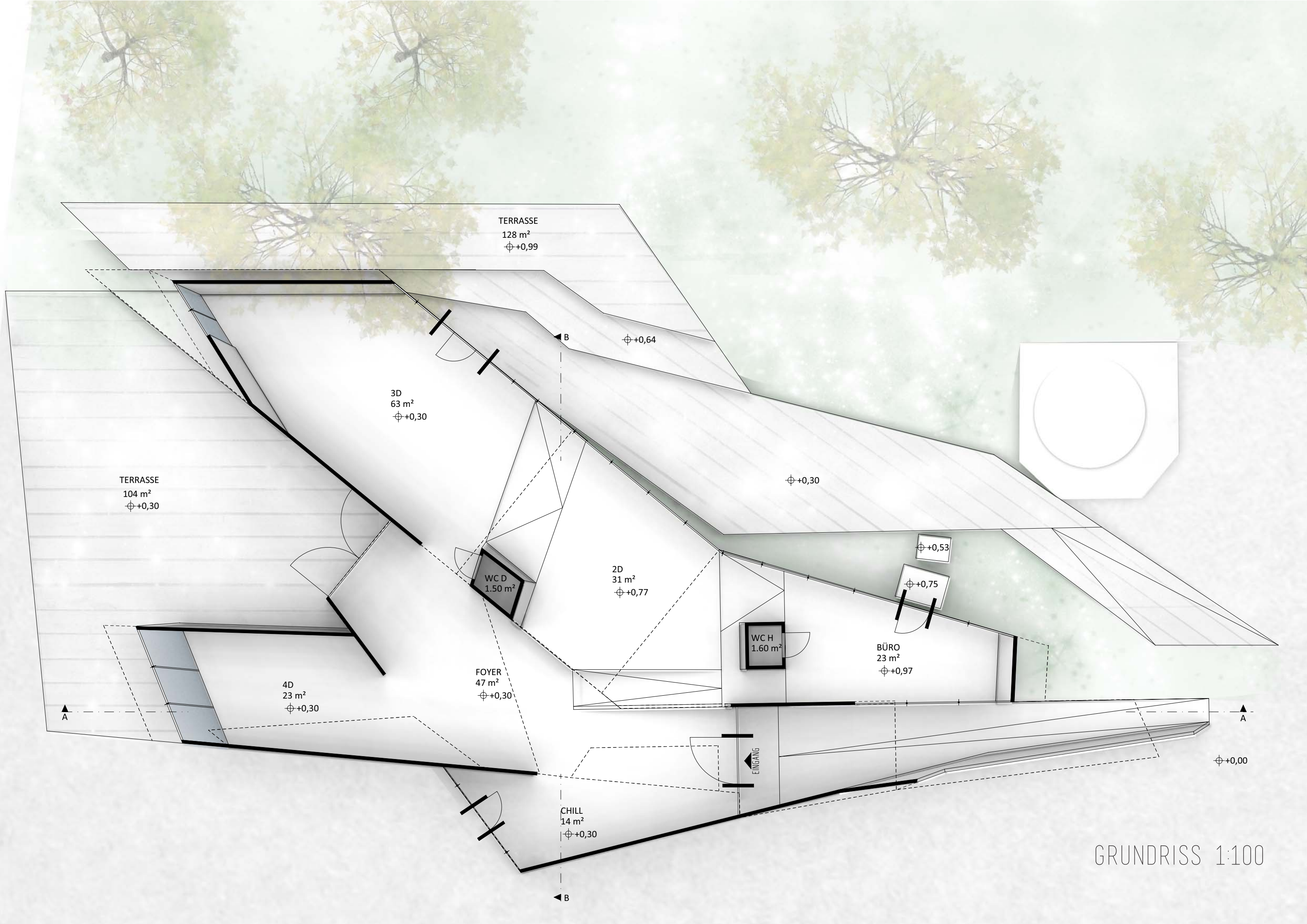




BILDUNG  
STUDENTEN - REALISIERUNGSPROJEKT  
/STUDIO 3 - INSTITUT FUER EXPERIMENTELLE ARCHITEKTUR  
UNIVERSITAET INNSBRUCK





TERRASSE  
128 m<sup>2</sup>  
±0,99

3D  
63 m<sup>2</sup>  
±0,30

TERRASSE  
104 m<sup>2</sup>  
±0,30

WC D  
1.50 m<sup>2</sup>

2D  
31 m<sup>2</sup>  
±0,77

±0,53

±0,75

WC H  
1.60 m<sup>2</sup>

BÜRO  
23 m<sup>2</sup>  
±0,97

4D  
23 m<sup>2</sup>  
±0,30

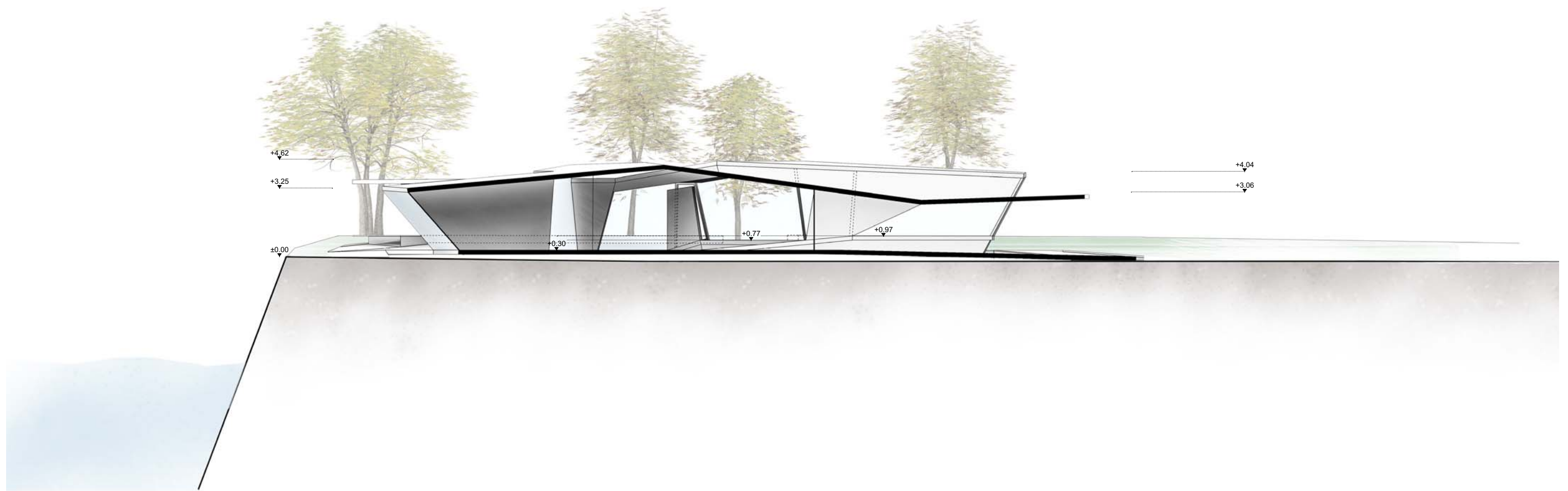
FOYER  
47 m<sup>2</sup>  
±0,30

±0,00

CHILL  
14 m<sup>2</sup>  
±0,30

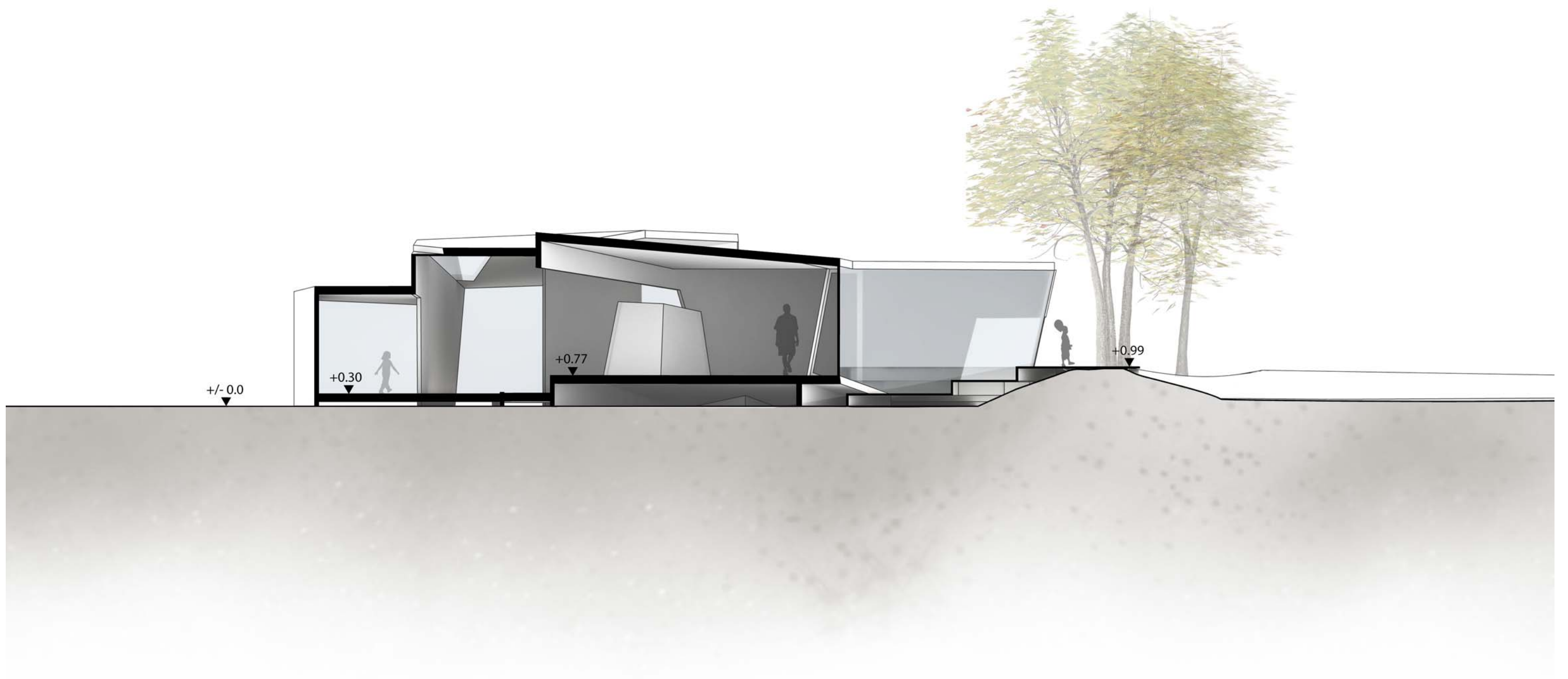
EINGANG

GRUNDRISS 1:100

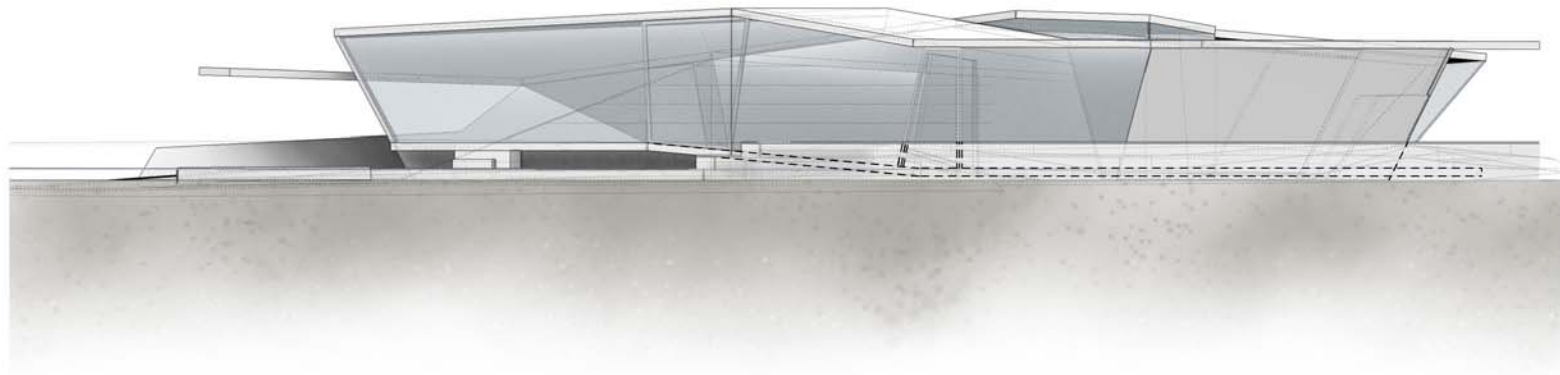


SCHNITT A - A 1:200

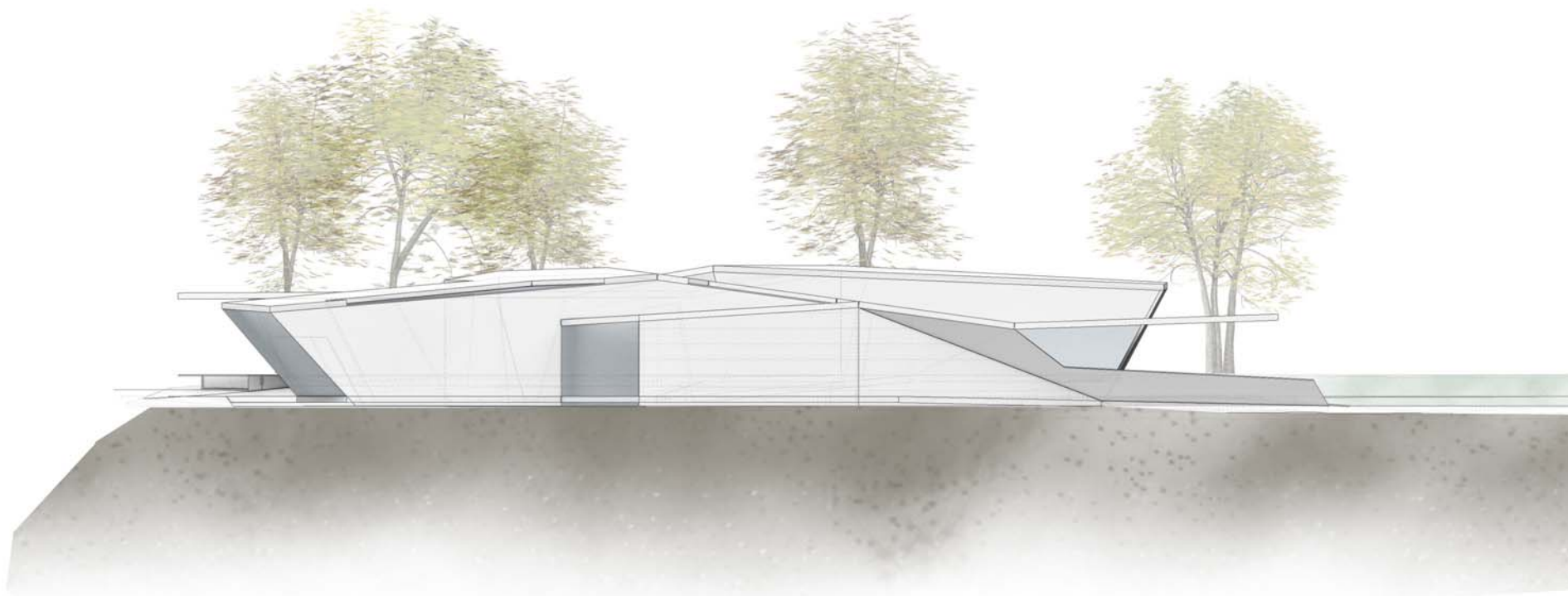




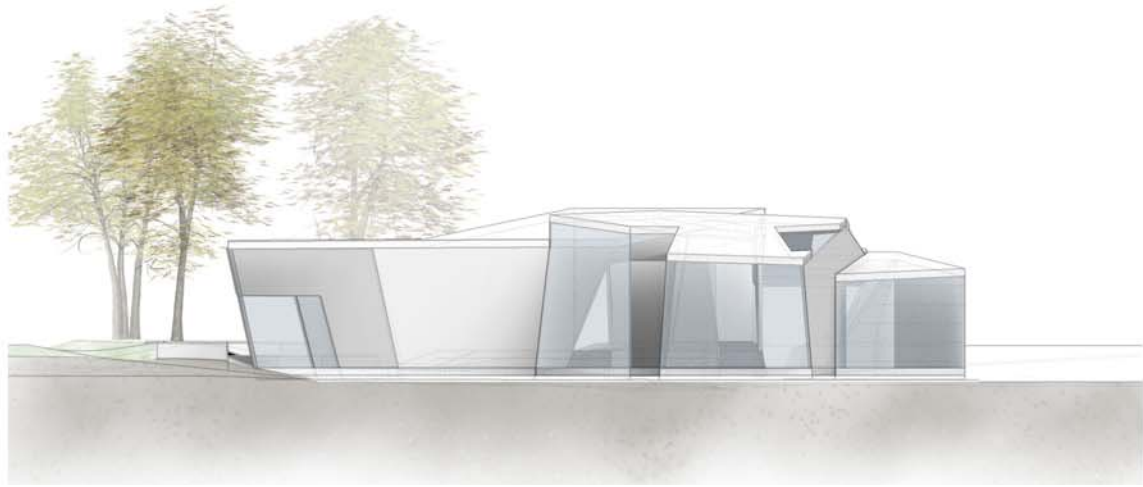
SCHNITT B - B 1:100



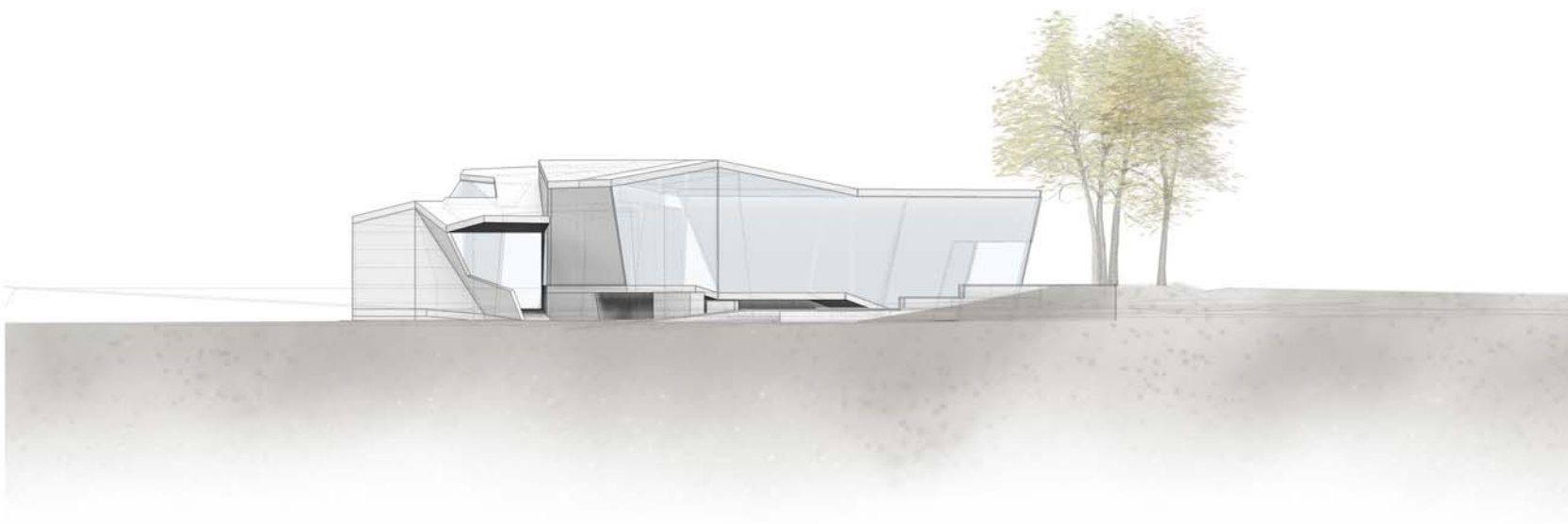
ANSICHT NORD 1:200



ANSICHT SUED 1:200

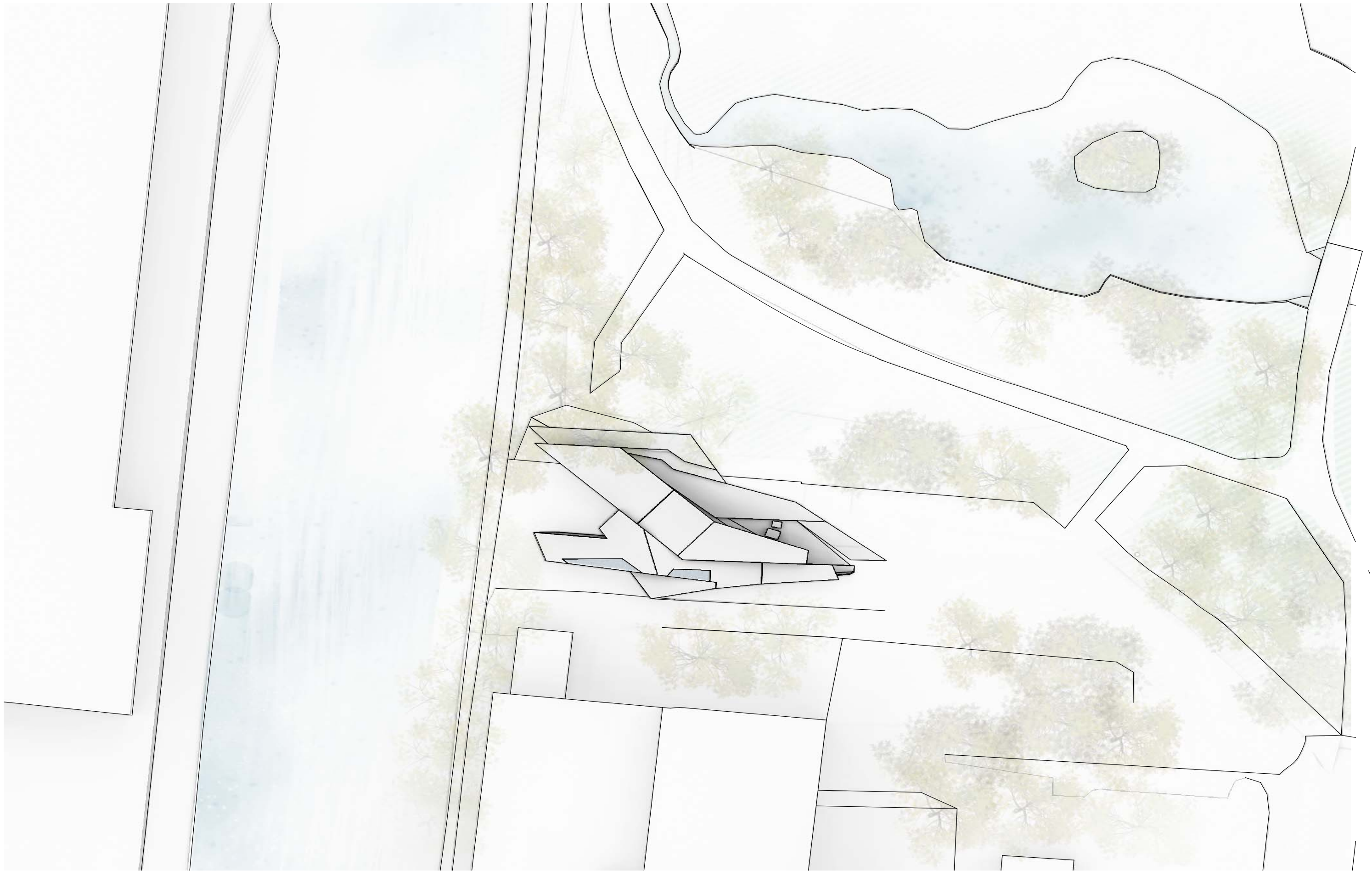


ANSICHT WEST 1:200

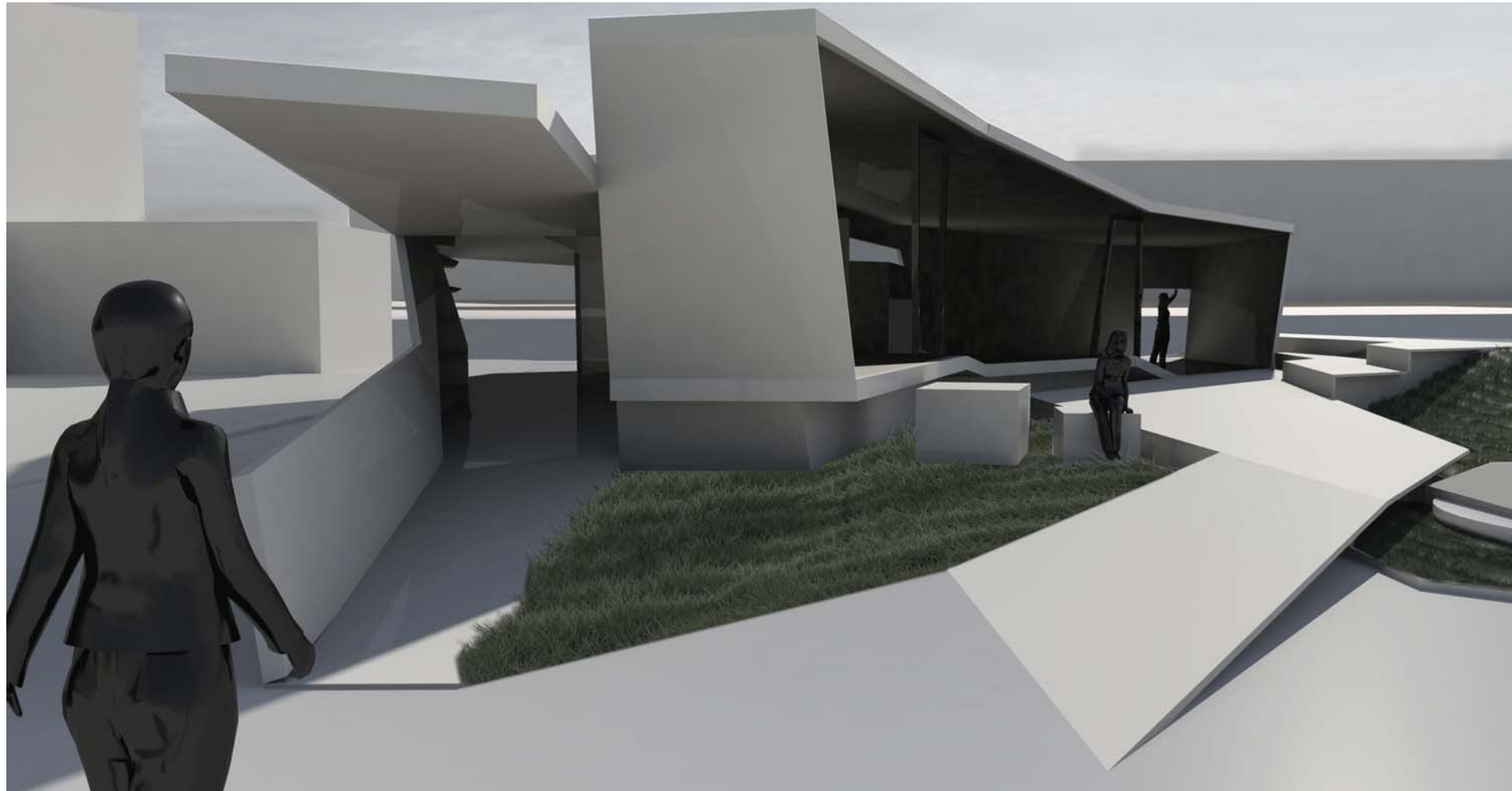


ANSICHT OST 1:200

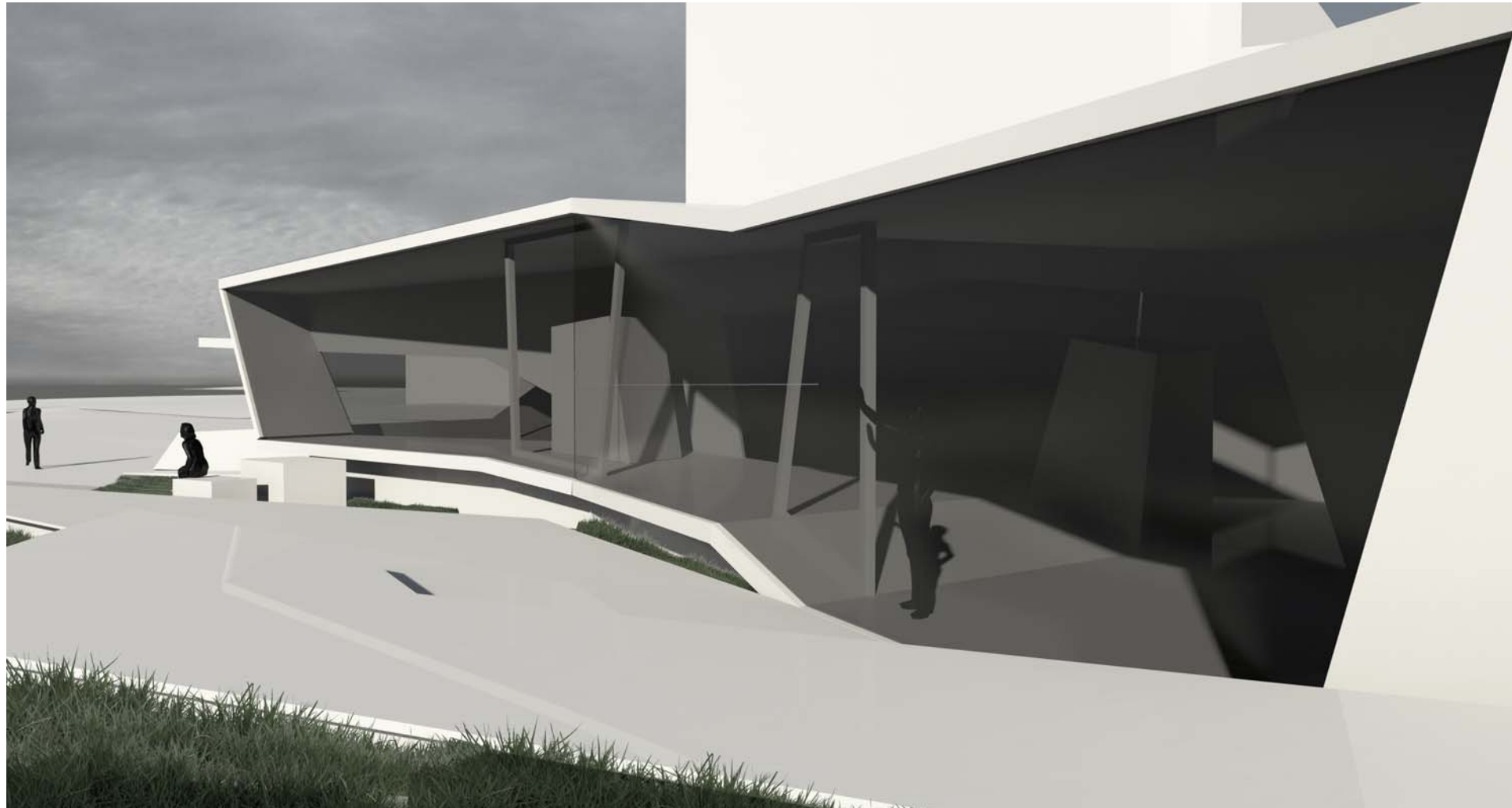




LAGEPLAN



RENDERING 1



RENDERING 2